

Zelio Relays

Solid state relays

Catalog

December 2018



Quick access to Product information

Select your Catalog, your Training

Digi-Cat

The complete digital catalog for industrial automation



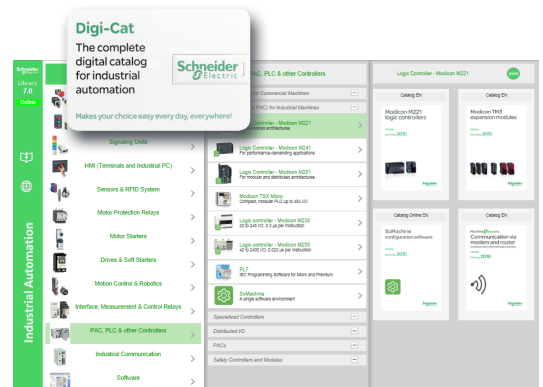
Makes your choice easy every day, everywhere!



With just 3 clicks, you can reach the 7,000 pages of the Industrial Automation & Control catalog, in both English and French.

- Digi-Cat is available on a USB key (for PC). To get your Digi-Cat, please contact your local center
- Download Digi-Cat from this address:

<http://digi-cat.schneider-electric.com/download.html>

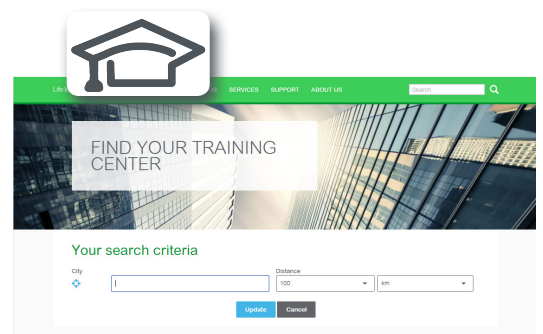
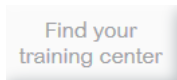


Find your training

- Find the right training for your needs
- Locate the training center with the selector tool, using this address:

<http://b2b/en/services/training/technical-training.jsp>

then click on



Life Is On



General contents

Zelio Relays - Solid state relays

■ General presentation

- Choose slim interfacing solution with SSL relays page 2
- Choose modularity with DIN rail mount SSM relays page 3
- Choose complete panel mount solution with SSP relays page 5

Selection guide page 6

■ SSL solid state slim relays

- Presentation of the range page 8
- Relay and socket description page 8
- References page 9
 - Pre-assembled solid state slim relays page 9
 - Relays and sockets for customer assembly page 10
 - Accessories page 11

■ SSM solid state modular DIN rail relays

- Presentation of the range page 12
- Relay description page 12
- References page 13
 - SSM1 single-phase solid state relays (12 and 18 mm) page 13
 - SSM2 single-phase solid state relays, dual channel page 14
 - SSM1 single-phase solid state relays (22.5 and 45 mm) page 14
 - SSM3 three-phase solid state relays page 15

■ SSP solid state panel mount relays

- Presentation of the range page 16
- Relay description page 16
- References page 17
 - SSP1 single-phase solid state relays page 17
 - SSP3 three-phase solid state relays page 18
 - Heat sinks and accessories page 19

■ **Product reference index** page 20

Zelio Relays - Solid state relays

Choose long life and silent operation with Zelio SSRs

Maintenance free

fully electronic,
unlimited life span

High switching frequency

allows precise and quick control

Silent and reliable switching

no moving parts,
noiseless switching

Sustainability in harsh environment

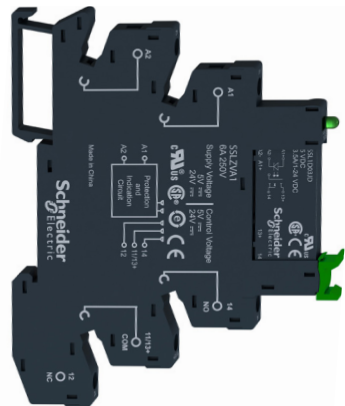
resistance to shock,
vibration, and contamination

The Zelio SSR series offers slim interface (SSL), modular DIN rail (SSM), and panel mount (SSP) solid state relays that provide complete, compact, and innovative solutions for a wide variety of applications with interfacing control and load switching. They are the ideal solution for packaging, plastic molding, textile, and heating furnace applications.

Choose a slim interfacing solution with SSL relays

Slim relay-socket solution

- > Complete range of control input and load output configurations for both AC and DC switching applications
- > Compact solution with 6 mm/0.236 in. width, allows customers to choose the combination of relays and associated sockets from the wide range available



SSL relays + SSLZ sockets	
Control input voltage	Load output voltage
⋯ 5...230 V	⋯ 1...48 V
⋯ 5...230 V	~ 24...250 V
~ 110...230 V	⋯ 1...48 V
~ 110...230 V	~ 24...250 V

SSL slim interface relay mounted on SSLZ socket

Enhanced performance in any situation

- > Socket with integrated reverse polarity protection circuit and control input/relay status LED indicator
- > IP67 protection and fully encapsulated



LED indicator for relay status

Simplified installation and mounting

- > Locking/unlocking lever for replacing relay from the socket
- > Simple mounting on DIN rail
- > Choice of screw connector and spring terminal connection for sockets



Screw connector



Spring terminal

SSL/RSL relays + SSLZ/RSLZ sockets → Slim plug-in interface solution

Choose modularity with DIN rail mount SSM relays

Ready to use "Plug and play"

- > Modular design of IP 20 housing and built-in heat sink for optimized operating conditions
- > Easy mounting on standard 35 mm/1.378 in. DIN rail with a secure mounting latch

Compact design

- > Requires less panel space due to slim width and thus reduces the size of your enclosures
- > Optimized modular design available in various sizes (11, 18, 22.5 and 45 mm width) with load output current of 6, 12, 20, 30, 45, and 55 A

11 mm/0.433 in.



SSM1: 6 A
single-phase SSR

18 mm/0.709 in.



SSM2: 6 A dual channel,
single-phase SSR

SSM1 relays

Control input voltage	Load output voltage
— 4...32 V	— 1...48 V — 1...100 V
— 4...32 V	~ 24...280 V ~ 48...600 V
~ 18...36 V ~ 90...140 V ~ 200...265 V	~ 24...280 V ~ 48...600 V

SSM2 relays

Control input voltage	Load output voltage
— 4...32 V	~ 24...280 V ~ 48...600 V

22.5 mm/0.886 in.



SSM1: 20 and 30 A
single-phase SSR

45 mm/1.772 in.



SSM1: 45 and 55 A
single-phase SSR

SSM1 relays

Control input voltage	Load output voltage
— 4...32 V	~ 24...280 V ~ 48...660 V
— 3...32 V	~ 24...280 V
~ 90...140 V ~ 90...280 V	~ 24...280 V ~ 48...660 V

90 mm/3.543 in.



SSM3: 25 A
three-phase SSR

SSM3 relays

Control input voltage	Load output voltage
— 4...32 V	~ 48...600 V
~ 90...140 V	~ 48...600 V
~ 180...280 V	~ 48...600 V

SSM1 (1-phase)/SSM2 (1-phase dual channel)/SSM3 (3-phase) → Plug & Play solution

Choose modularity with DIN rail mount SSM relays (continued)

Enhanced modular solution

- > Wide choice of relays with single-phase and three-phase options and current ratings from 6 A to 55 A
- > Zero voltage switching for resistive loads and random switching for inductive loads
- > UL and cUL approved including the general purpose and motor controller rating standards

Choose a complete panel mount solution with SSP relays

Complete solution

- > Single-phase and three-phase panel mount solid state relays with a range of heat sinks and accessories to meet application needs from 10 A to 125 A
- > Easy product selection with simplified product nomenclature and direct heat sink selection available in product data sheets
- > Wide choice of heat sinks with thermal resistance ratings of 0.2 °C/W to 2.5 °C/W



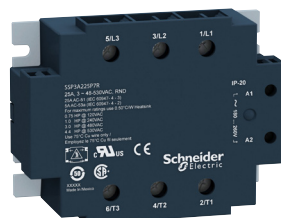
SSP1: Single-phase panel mount SSR

SSP1 relays	
Control input voltage	Load output voltage
---3.5...32 V	---1...150 V
---3...32 V	~24...300 V
---4...32 V	~48...660 V
~90...280 V	~24...300 V
	~48...660 V



SSP1.S: Single-phase panel mount SSR with smart diagnostic features

SSP1.S relays	
Control input voltage	Load output voltage
---3...32 V	~24...300 V
---4...32 V	~48...660 V



SSP3: Three-phase panel mount SSR

SSP3 relays	
Control input voltage	Load output voltage
---4-32 V	~48-530 V
~18-36 V	~48-530 V
~90-140 V	
~180-280 V	

Zelio SSR → The new generation solid state relays

**Choose a complete panel mount solution with SSP relays
(continued)**

Simple, safe, and robust screw terminals

- > Simple and easy wiring; accepts wires with different kinds of terminations (cable ends, fork lug, ring lug)
- > Safe and fool-proof design with IP 20 protection and integrated enclosure
- > Robust self-aligned screw terminals with proven effectiveness in helping to prevent screw jams

Innovative SSP1.S with smart diagnostics and test button

- > Smart diagnostic features with built-in visual indicator and alarm output enables quick response to unexpected results and correct monitoring of SSR operation
- > A test button for easy debugging, testing, and commissioning

Simplified installation and mounting

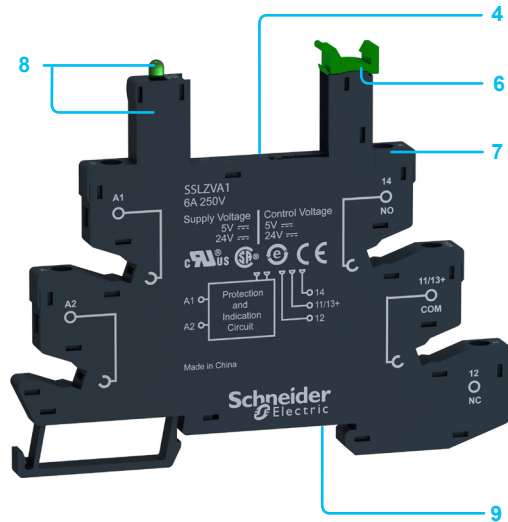
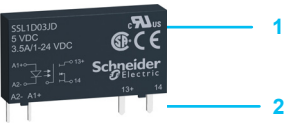
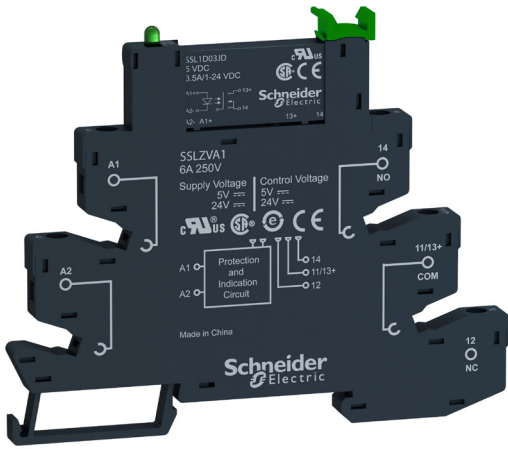
- > Product option with readily available factory-fit thermal pad
- > Heat sink offers panel and DIN rail mounting options

Type of product	Slim interface SSR	Modular DIN rail SSR		
				
Number of phases	1	1	1 (dual SSR)	
Type of mounting	Plug-in PCB pins with DIN rail mounted socket	DIN rail mounted		
Control input voltage	~ 110...230 V	18...36 V 90...140 V 200...265 V	–	
	≡ 5...230 V	4...32 V	–	
Output load voltage	~ 24...250 V	24...280 V 48...600 V	–	
	≡ 1...24 V 1...48 V	1...60 V 1...100 V	–	
Output load current	~ 2 A	6 A for SSM1 (12 mm/0.472 in.) 12 A for SSM1 (18 mm/0.708 in.)	6 A	
	≡ 0.1, 3.5 A	6 A for SSM1 (12 mm/0.472 in.) 12 A for SSM1 (18 mm/0.708 in.)	–	
Type of switching	Zero voltage	Yes	Yes	
	Random	Yes	Yes	
	DC	Yes	–	
Cooling	–	Built-in heat sink		
Degree of protection	IP 67 (encapsulation) IP 20 (socket)	IP 20		
LED indication	Yes (on socket)	Yes		
Solid state relay type	SSL (1) (2)	SSM1	SSM2	
Pages	9	13	14	

(1) SSL relay with SSLZ socket.
 (2) Pre-assembled SSL slim relays (relay + socket) are also available.

Modular DIN rail SSR		Panel mount SSR			
					
1	3	1	3		
DIN rail mounted	DIN rail mounted	Panel mounted	Panel mounted		
90...140 V 90...280 V	90...140 V 90...280 V	90...280 V	18...36 V 90...140 V 180...280 V		
3...32 V 4...32 V	4...32 V	3...32 V 4...32 V	4...32 V		
24...280 V 48...660 V	48...600 V	24...300 V 48...660 V	48...530 V		
–	–	1...150 V	–		
20, 30 A for SSM1 (22.5 mm/0.886 in.) 45, 55 A for SSM1 (45 mm/1.772 in.)	25 A	10, 25, 50, 75, 90, 125 A	25, 50 A		
–	–	12, 25, 40 A	–		
Yes	Yes	Yes	Yes		
–	Yes	–	Yes		
–	–	Yes	–		
Built-in heat sink	–	Option with thermal pad	Option with thermal pad		
IP 20	–	–	–		
Yes	–	Yes	Yes		
SSM1	SSM3	SSP1	SSP3		
13	15	17	18		

More technical information on www.schneider-electric.com



Presentation of the range

SSL solid state relays offer the advantages of several input and output configurations for both AC and DC switching applications. Their compact size and modular design reduces space and allows easy mounting on the socket.

The plug-in type relays can be mounted directly on a PCB or with a socket on a standard 35 mm/1.378 in. DIN rail. The sockets are available in screw connector and spring terminal types.

SSL relays offer:

- A choice of relays and sockets to suit a range of operating voltages
- Zero voltage switching for resistive load and random switching for inductive load applications
- Simple maintenance as the relays can be held in place/released by locking/unlocking the lever without disconnecting the socket wiring
- Socket with reverse polarity protection circuit and LED indicator for easy identification of control status

These relays are available in both pre-assembled (single reference) and customer assembled offers.

Relay description

SSL slim solid state relays

- 1 Relay with 1 N/O contact and any one of the following ratings:
 - 24 V $\overline{\text{---}}$, 3.5 A
 - 48 V $\overline{\text{---}}$, 100 mA
 - 280 V \sim , 2 A
- 2 4 flat, reinforced pins (PCB type)
- 3 5 mm/0.197 in. relay width for up to 3.5 A of load current

Socket description

Sockets for SSL slim solid state relays

- 4 5 female contacts for the relay pins
- 5 6.2 mm/0.244 in. socket width
- 6 Lever for locking or releasing the relay from its socket with clip-in marker legend
- 7 Wire connection by screw connectors or spring terminals
- 8 Built-in reverse polarity protection circuit and LED indicator
- 9 Locating slot for mounting on DIN rail

SSR_60278_CPMFS18002B



SSL1A12JDRPR

Pre-assembled solid state slim relays					
Relays mounted on screw sockets (sold in lots of 30)					
Switching	Voltage range		Load current range	Reference	Weight
	Control input	Load output			
	V	V	A	kg/lb	
DC Switching	≡ 4 to 12	≡ 1 to 24	3.5	SSL1D03JDPV (SSL1D03JD + SSLZVA1)	0.033/0.073
	≡ 4 to 12	≡ 1 to 48	0.1	SSL1D101JDPV (SSL1D101JD+SSLZVA1)	0.033/0.073
Zero voltage switching	≡ 4 to 12	~ 24 to 250	2	SSL1A12JDPV (SSL1A12JD+SSLZVA1)	0.033/0.073
Random switching	≡ 4 to 12	~ 24 to 250	2	SSL1A12JDRPV (SSL1A12JDR+SSLZVA1)	0.033/0.073
DC Switching	≡ 16 to 30	≡ 1 to 24	3.5	SSL1D03BDPV (SSL1D03BD+SSLZVA1)	0.033/0.073
	≡ 16 to 30	≡ 1 to 48	0.1	SSL1D101BDPV (SSL1D101BD+SSLZVA1)	0.033/0.073
Zero voltage switching	≡ 16 to 30	~ 24 to 250	2	SSL1A12BDPV (SSL1A12BD+SSLZVA1)	0.033/0.073
Random switching	≡ 16 to 30	~ 24 to 250	2	SSL1A12BDRPV (SSL1A12BDR+SSLZVA1)	0.033/0.073
Relays mounted on spring sockets (sold in lots of 30)					
DC Switching	≡ 4 to 12	≡ 1 to 24	3.5	SSL1D03JDPR (SSL1D03JD+SSLZRA1)	0.033/0.073
	≡ 4 to 12	≡ 1 to 48	0.1	SSL1D101JDPR (SSL1D101JD+SSLZRA1)	0.033/0.073
Zero voltage switching	≡ 4 to 12	~ 24 to 250	2	SSL1A12JDPR (SSL1A12JD+SSLZRA1)	0.033/0.073
Random switching	≡ 4 to 12	~ 24 to 250	2	SSL1A12JDRPR (SSL1A12JDR+SSLZRA1)	0.033/0.073
DC Switching	≡ 16 to 30	≡ 1 to 24	3.5	SSL1D03BDPR (SSL1D03BD+SSLZRA1)	0.033/0.073
	≡ 16 to 30	≡ 1 to 48	0.1	SSL1D101BDPR (SSL1D101BD+SSLZRA1)	0.033/0.073
Zero voltage switching	≡ 16 to 30	~ 24 to 250	2	SSL1A12BDPR (SSL1A12BD+SSLZRA1)	0.033/0.073
Random switching	≡ 16 to 30	~ 24 to 250	2	SSL1A12BDRPR (SSL1A12BDR+SSLZRA1)	0.033/0.073

PFT123403A



SSL1A12JD

PFT123420B



SSLZVA1 + SSL1D03JD

Relays and sockets for customer assembly

SSL single-phase solid state relays (sold in lots of 12)

Switching	Voltage range		Load current range	Reference	Weight
	Control input	Load output			
	V	V	A		kg/lb
DC switching	--- 3 to 12	--- 1 to 24	3.5	SSL1D03JD	0.004/0.009
		--- 1 to 48	0.1	SSL1D101JD	0.004/0.009
	--- 15 to 30	--- 1 to 24	3.5	SSL1D03BD	0.004/0.009
		--- 1 to 48	0.1	SSL1D101BD	0.004/0.009
	--- 38 to 72	--- 1 to 24	3.5	SSL1D03ND	0.004/0.009
		--- 1 to 48	0.1	SSL1D101ND	0.004/0.009
Zero voltage switching	--- 3 to 12	~ 24 to 280	2	SSL1A12JD	0.004/0.009
	--- 15 to 30	~ 24 to 280	2	SSL1A12BD	0.004/0.009
	--- 38 to 72	~ 24 to 280	2	SSL1A12ND	0.004/0.009
Random switching	--- 3 to 12	~ 24 to 280	2	SSL1A12JDR	0.004/0.009
	--- 15 to 30	~ 24 to 280	2	SSL1A12BDR	0.004/0.009
	--- 38 to 72	~ 24 to 280	2	SSL1A12NDR	0.004/0.009

Sockets equipped with LED and protection circuit (sold in lots of 10)

Control voltage (Nominal)	For use with relays	Socket type		Spring terminals	
		Screw connector		Spring terminals	
		Unit reference	Weight	Unit reference	Weight
V			kg/lb		kg/lb
--- 5	SSL1D03JD SSL1D101JD SSL1A12JD SSL1A12JDR	SSLZVA1	0.029/0.063	SSLZRA1	0.029/0.063
--- 24	SSL1D03BD SSL1D101BD SSL1A12BD SSL1A12BDR	SSLZVA1	0.029/0.063	SSLZRA1	0.029/0.063
--- 60	SSL1D03ND SSL1D101ND SSL1A12ND SSL1A12NDR	SSLZVA2	0.029/0.063	SSLZRA2	0.029/0.063
---/~ 110	SSL1D03ND SSL1D101ND SSL1A12ND SSL1A12NDR	SSLZVA3	0.029/0.063	SSLZRA3	0.029/0.063
---/~ 230	SSL1D03ND SSL1D101ND SSL1A12ND SSL1A12NDR	SSLZVA4	0.029/0.063	SSLZRA4	0.029/0.063



RSLZ2



RSLZ3

Accessories for sockets

Description	Compatibility	Reference	Weight kg/lb
Clip-in legends (2 sheets of 64 legends)	SSL sockets	RSLZ5	0.001/0.002
Bus jumper (10 x 20-pole jumper)	SSL sockets	RSLZ2	0.003/0.007
Partition plate (10 partition plates)	SSL sockets	RSLZ3	0.001/0.002

Presentation of the range

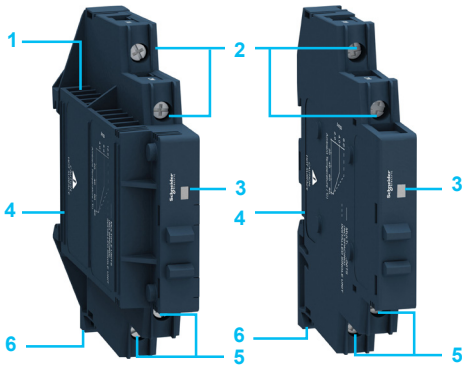
SSM solid state relays are compact relays offering greater power density. The modular IP 20 housing design and built-in heat sink offer optimized operating solutions.

The SSM relay range comprises:

- **SSM1:** Single-phase SSR relays with 6, 12, 20, 30, 45, and 55 A ratings
- **SSM2:** Single-phase dual SSR relays with 6 A rating
- **SSM3:** Three-phase SSR relays with 25 A rating

Relay description

SSM1 relays, 12 mm/0.472 in. (6 A) width and 18 mm/0.709 in. (12 A) width



- 1 Built-in heat sink for heat dissipation
- 2 Control input connection terminals
- 3 Control input voltage LED indicator in green
- 4 Bracket for mounting on 35 mm/1.378 in. DIN rail
- 5 Load output connection terminals
- 6 Mounting latch



SSM2 relays, 18 mm/0.709 in. (6 A) width

- 1 Built-in heat sink for heat dissipation
- 2 Load output connection terminals for Channel A
- 3 Separate input voltage LED indicator in green
- 4 Separate control input connection terminals
- 5 Load output connection terminals for Channel B
- 6 Mounting latch
- 7 Bracket for mounting on 35 mm/1.378 in. DIN rail



SSM1 relays, 22.5 mm/0.886 in. (20 A, 30 A) width and 45 mm/1.771 in. (45 A, 55 A) width

- 1 Lugs for panel mounting
- 2 Built-in heat sink for heat dissipation
- 3 Control input connection terminals
- 4 Control input voltage LED indicator in green
- 5 Bracket for mounting on 35 mm/1.378 in. DIN rail
- 6 Load output connection terminals



SSM3 relays, 90 mm/0.3543 in. (25 A) width

- 1 Lugs for panel mounting
- 2 Built-in heat sink for heat dissipation
- 3 Control input connection terminals
- 4 Control input voltage LED indicator in green
- 5 Bracket for mounting on 35 mm/1.378 in. DIN rail
- 6 Load output connection terminals

Zelio Relays - Solid state relays

SSM solid state modular relays



SSM1A36BD



SSM1A312BD

SSM1 single-phase solid state relays (12 and 18 mm)								
Switching	Voltage range		Load current range	Reference	Weight			
	Control input	Load output						
	V	V	A		kg/lb			
DC switching	≡ 4...32	≡ 1...60	6	SSM1D26BD	0.050/0.110			
			12	SSM1D212BD	0.090/0.198			
	≡ 1...100	≡ 1...100	6	SSM1D36BD	0.050/0.110			
			12	SSM1D312BD	0.090/0.198			
			Zero voltage switching	≡ 4...32	~ 24...280	6	SSM1A16BD	0.050/0.110
						12	SSM1A112BD	0.090/0.198
~ 48...600	~ 48...600	6		SSM1A36BD	0.050/0.110			
		12		SSM1A312BD	0.090/0.198			
		~ 18...36		~ 24...280	6	SSM1A16B7	0.050/0.110	
					12	SSM1A112B7	0.090/0.198	
~ 48...600	~ 48...600	12	SSM1A312B7	0.090/0.198				
		~ 90...140	~ 24...280	6	SSM1A16F7	0.050/0.110		
				12	SSM1A112F7	0.090/0.198		
~ 48...600	~ 48...600	12	SSM1A312F7	0.090/0.198				
		~ 200...265	~ 24...280	6	SSM1A16P7	0.050/0.110		
				12	SSM1A112P7	0.090/0.198		
~ 48...600	~ 48...600	12	SSM1A312P7	0.090/0.198				
		Random switching	≡ 4...32	~ 24...280	6	SSM1A16BDR	0.050/0.110	
					12	SSM1A112BDR	0.090/0.198	
~ 48...600	~ 48...600		6	SSM1A36BDR	0.050/0.110			
			12	SSM1A312BDR	0.090/0.198			
			~ 18...36	~ 24...280	6	SSM1A16B7R	0.050/0.110	
					12	SSM1A112B7R	0.090/0.198	
~ 48...600	~ 48...600	12	SSM1A312B7R	0.090/0.198				
		~ 90...140	~ 24...280	6	SSM1A16F7R	0.050/0.110		
				12	SSM1A112F7R	0.090/0.198		
~ 48...600	~ 48...600	12	SSM1A312F7R	0.090/0.198				
		~ 200...265	~ 24...280	6	SSM1A16P7R	0.050/0.110		
				12	SSM1A112P7R	0.090/0.198		
~ 48...600	~ 48...600	12	SSM1A312P7R	0.090/0.198				

Zelio Relays - Solid state relays

SSM solid state modular relays



SSM2A36BD

SSM2 single-phase solid state relays, dual channel

Switching	Voltage range		Load current range	Reference	Weight
	Control input	Load output			
	V	V			
Zero voltage switching	⎓ 4...32	~ 24...280	6	SSM2A16BD	0.090/0.198
		~ 48...600	6	SSM2A36BD	0.090/0.198
Random switching	⎓ 4...32	~ 24...280	6	SSM2A16BDR	0.090/0.198
		~ 48...600	6	SSM2A36BDR	0.090/0.198



SSM1A120M7



SSM1A445BD

SSM1 single-phase solid state relays (22.5 and 45 mm)

Switching	Voltage range		Load current range	Reference	Weight
	Control input	Load output			
	V	V			
Zero voltage switching	⎓ 4...32	~ 24...280	20	SSM1A120BD	0.280/0.617
			30	SSM1A130BD	0.280/0.617
	⎓ 3...32	~ 24...280	45	SSM1A145BD	0.476/1.049
	⎓ 4...32	~ 48...660	30	SSM1A430BD	0.280/0.617
			45	SSM1A445BD	0.476/1.049
			55	SSM1A455BD	0.476/1.049
	~ 90...280	~ 24...280	20	SSM1A120M7	0.280/0.617
			30	SSM1A130M7	0.280/0.617
		~ 48...660	30	SSM1A430M7	0.280/0.617
	~ 90...140	~ 24...280	45	SSM1A145F7	0.476/1.049
		~ 48...660	45	SSM1A445F7	0.476/1.049
			55	SSM1A455F7	0.476/1.049

PF152212

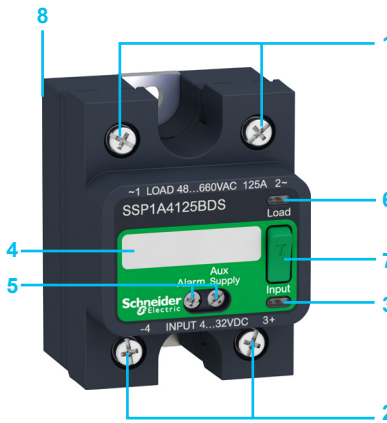


SSM3A325F7

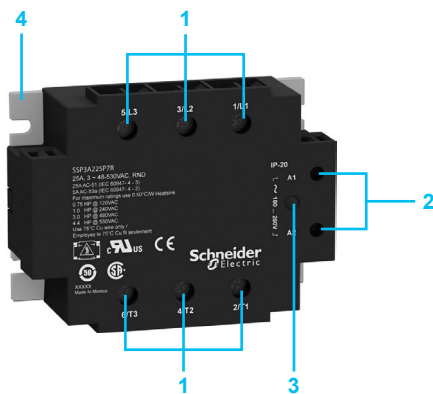
SSM3 three-phase solid state relays					
Switching	Voltage range		Load current range	Reference	Weight
	Control input	Load output			
	V	V	A		kg/lb
Zero voltage switching	≡ 4...32	~ 48...600	25	SSM3A325BD	0.740/1.631
	~ 90...140	~ 48...600	25	SSM3A325F7	0.740/1.631
	~ 180...280	~ 48...600	25	SSM3A325P7	0.740/1.631
Random switching	≡ 4...32	~ 48...600	25	SSM3A325BDR	0.740/1.631



SSP1 single-phase panel mount relays



SSP1 single-phase panel mount relays with smart diagnostic feature



SSP3 three-phase panel mount relays

Presentation of the range

SSP solid state relays are single-phase and three-phase panel mount relays that offer complete solid state control and switching solutions.

- Easy product selection with simplified product nomenclature and direct heat sink selection available in product data sheets.
- Wide choice of heat sinks with thermal resistance ratings of 2.5 °C/W to 0.2 °C/W.

The SSP relay range comprises:

- **SSP1:** Single-phase panel mount solid state relays available with/without embedded thermal pad and smart diagnostic features, extended load output voltage of up to 660 V ~ and load current rating of 10 A to 125 A.
- **SSP3:** Three-phase panel mount solid state relays integrated with R-C snubber circuit, TVS (Transient Voltage Suppression), and load current ratings of 25 A and 50 A.

Relay description

SSP1 single-phase panel mount relays

- 1 Load output connection screw terminals
- 2 Control input connection screw terminals
- 3 Control input voltage LED indicator
- 4 Indication area for product label or markings
- 5 Smart diagnostic auxiliary input and alarm output
- 6 Load output LED indicator
- 7 Test button
- 8 Optional factory-fit thermal pad that is glued on the rear of the product

SSP3 three-phase panel mount relays

- 1 Load output connection screw terminals
- 2 Control input connection screw terminals
- 3 Control input voltage LED indicator
- 4 Optional factory-fit thermal pad that is glued on the rear of the product



SSP1D425BD



SSP1A125BDS

SSP1 single-phase solid state relays

Relays with embedded thermal pad

Switching	Voltage range		Load current range	Reference	Weight
	Control input	Load output			
	V	V	A		kg/lb
DC switching	≡ 3.5...32	≡ 1...150	12	SSP1D412BDT	0.089/0.196
			25	SSP1D425BDT	0.089/0.196
			40	SSP1D440BDT	0.089/0.196
Zero voltage switching	≡ 3...32	~ 24...300	10	SSP1A110BDT	0.089/0.196
			25	SSP1A125BDT	0.089/0.196
			50	SSP1A150BDT	0.089/0.196
	≡ 4...32	~ 48...660	75	SSP1A175BDT	0.089/0.196
			50	SSP1A450BDT	0.089/0.196
			75	SSP1A475BDT	0.089/0.196
	~ 90...280	~ 24...300	90	SSP1A490BDT	0.089/0.196
			125	SSP1A4125BDT	0.089/0.196
			10	SSP1A110M7T	0.089/0.196
			25	SSP1A125M7T	0.089/0.196
			50	SSP1A150M7T	0.089/0.196
			75	SSP1A175M7T	0.089/0.196
	~ 48...660		50	SSP1A450M7T	0.089/0.196
			75	SSP1A475M7T	0.089/0.196
			90	SSP1A490M7T	0.089/0.196
125	SSP1A4125M7T	0.089/0.196			

Relays without embedded thermal pad

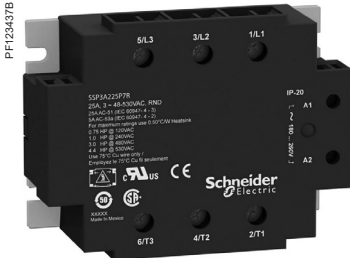
DC switching	≡ 3.5...32	≡ 1...150	12	SSP1D412BD	0.089/0.196
			25	SSP1D425BD	0.089/0.196
			40	SSP1D440BD	0.089/0.196
Zero voltage switching	≡ 3...32	~ 24...300	10	SSP1A110BD	0.089/0.196
			25	SSP1A125BD	0.089/0.196
			50	SSP1A150BD	0.089/0.196
	≡ 4...32	~ 48...660	75	SSP1A175BD	0.089/0.196
			50	SSP1A450BD	0.089/0.196
			75	SSP1A475BD	0.089/0.196
	~ 90...280	~ 24...300	90	SSP1A490BD	0.089/0.196
			125	SSP1A4125BD	0.089/0.196
			10	SSP1A110M7	0.089/0.196
			25	SSP1A125M7	0.089/0.196
			50	SSP1A150M7	0.089/0.196
			75	SSP1A175M7	0.089/0.196
	~ 48...660		50	SSP1A450M7	0.089/0.196
			75	SSP1A475M7	0.089/0.196
			90	SSP1A490M7	0.089/0.196
125	SSP1A4125M7	0.089/0.196			

Relays with embedded thermal pad and smart diagnostic features

Zero voltage switching	≡ 3...32	~ 24...300	25	SSP1A125BDS	0.097/0.214
			50	SSP1A150BDS	0.097/0.214
			50	SSP1A450BDS	0.097/0.214
	≡ 4...32	~ 48...660	75	SSP1A475BDS	0.097/0.214
			90	SSP1A490BDS	0.097/0.214
			125	SSP1A4125BDS	0.097/0.214

Zelio Relays - Solid state relays

SSP solid state panel mount relays



SSP3A225P7

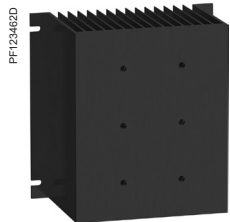
SSP3 three-phase solid state relays

Relays with embedded thermal pad

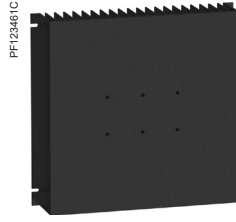
Switching	Voltage range		Load current range	Reference	Weight
	Control Input	Load Output			
	V	V	A		kg/lb
Zero voltage switching	≡ 4...32	~ 48...530	25	SSP3A225BDT	0.240/0.529
			50	SSP3A250BDT	0.240/0.529
	~ 18...36	~ 48...530	25	SSP3A225B7T	0.240/0.529
			50	SSP3A250B7T	0.240/0.529
	~ 90...140	~ 48...530	25	SSP3A225F7T	0.240/0.529
			50	SSP3A250F7T	0.240/0.529
	~ 180...280	~ 48...530	25	SSP3A225P7T	0.240/0.529
			50	SSP3A250P7T	0.240/0.529
Random switching	≡ 4...32	~ 48...530	25	SSP3A225BDRT	0.240/0.529
			50	SSP3A250BDRT	0.240/0.529
	~ 18...36	~ 48...530	25	SSP3A225B7RT	0.240/0.529
			50	SSP3A250B7RT	0.240/0.529
	~ 90...140	~ 48...530	25	SSP3A225F7RT	0.240/0.529
			50	SSP3A250F7RT	0.240/0.529
	~ 180...280	~ 48...530	25	SSP3A225P7RT	0.240/0.529
			50	SSP3A250P7RT	0.240/0.529

Relays without embedded thermal pad

Zero voltage switching	≡ 4...32	~ 48...530	25	SSP3A225BD	0.240/0.529
			50	SSP3A250BD	0.240/0.529
	~ 18...36	~ 48...530	25	SSP3A225B7	0.240/0.529
			50	SSP3A250B7	0.240/0.529
	~ 90...140	~ 48...530	25	SSP3A225F7	0.240/0.529
			50	SSP3A250F7	0.240/0.529
	~ 180...280	~ 48...530	25	SSP3A225P7	0.240/0.529
			50	SSP3A250P7	0.240/0.529
Random switching	≡ 4...32	~ 48...530	25	SSP3A225BDR	0.240/0.529
			50	SSP3A250BDR	0.240/0.529
	~ 18...36	~ 48...530	25	SSP3A225B7R	0.240/0.529
			50	SSP3A250B7R	0.240/0.529
	~ 90...140	~ 48...530	25	SSP3A225F7R	0.240/0.529
			50	SSP3A250F7R	0.240/0.529
	~ 180...280	~ 48...530	25	SSP3A225P7R	0.240/0.529
			50	SSP3A250P7R	0.240/0.529



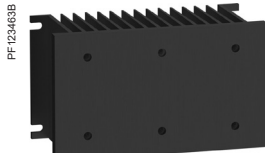
SSRHP05



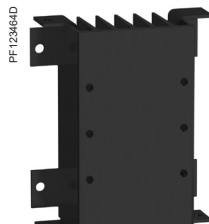
SSRHP02



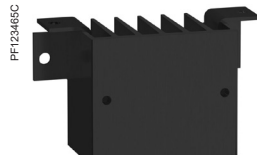
SSRHP07



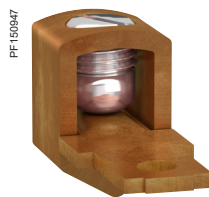
SSRHP10



SSRHP17



SSRHP25



SSRAL1



SSRAL2

Heat sinks for customer assembly

Mounting	Number and type of relays supported	Surface area	Thermal resistance	Reference	Weight
		cm ² /in ²	°C/W		
Panel mount	Up to 3 SSP1 units 1 SSP3 unit	6,823/1,058	0.2	SSRHP02	2.592/5.714
	Up to 3 SSP1 units 1 SSP3 unit	4,406/683	0.5	SSRHP05	1.440/3.174
	1 SSP1 unit	1,640/254	0.7	SSRHP07	0.526/1.159
	Up to 3 SSP1 units 1 SSP3 unit	1,425/221	1	SSRHP10	0.620/1.367
	Up to 2 SSP1 units	659/102	1.7	SSRHP17	0.195/0.430
DIN rail mount	1 SSP1 unit	336/52.10	2.5	SSRHP25	0.100/0.220
	Up to 3 SSP1 units 1 SSP3 unit	1,425/221	1	SSRHD10	0.630/1.389

Accessories

Description	Type of relays supported	Unit reference	Weight kg/lb
Copper terminal lug for AWG 6 (13.3 mm ²) to AWG 0 (53.5 mm ²) Sold in lots of 10	SSP1	SSRAL1	0.042/0.093
Copper terminal lug for AWG 14 (2.1 mm ²) to AWG 6 (13.3 mm ²) Sold in lots of 10	SSP1	SSRAL2	0.009/0.002

R			
RSLZ2	9	SSM1A130M7	14
RSLZ3	9	SSM1A145BD	14
RSLZ5	9	SSM1A145F7	14
		SSM1A312B7	13
		SSM1A312B7R	13
		SSM1A312BD	13
		SSM1A312BDR	13
		SSM1A312F7	13
		SSM1A312F7R	13
		SSM1A312P7	13
		SSM1A312P7R	13
		SSM1A430BD	14
		SSM1A430M7	14
		SSM1A445BD	14
		SSM1A445F7	14
		SSM1A455BD	14
		SSM1A455F7	14
		SSM1D26BD	13
		SSM1D36BD	13
		SSM1D212BD	13
		SSM1D312BD	13
		SSM2A16BD	14
		SSM2A16BDR	14
		SSM2A36BD	14
		SSM2A36BDR	14
		SSM3A325BD	15
		SSM3A325BDR	15
		SSM3A325F7	15
		SSM3A325P7	15
		SSP1A110BD	17
		SSP1A110BDT	17
		SSP1A110M7	17
		SSP1A110M7T	17
		SSP1A125BD	17
		SSP1A125BDS	17
		SSP1A125BDT	17
		SSP1A125M7	17
		SSP1A125M7T	17
		SSP1A150BD	17
		SSP1A150BDS	17
		SSP1A150BDT	17
		SSP1A150M7	17
		SSP1A150M7T	17
		SSP1A175BD	17
		SSP1A175BDT	17
		SSP1A175M7	17
		SSP1A175M7T	17
		SSP1A450BD	17
		SSP1A450BDS	17
		SSP1A450BDT	17
		SSP1A450M7	17
		SSP1A450M7T	17
		SSP1A475BD	17
		SSP1A475BDS	17
		SSP1A475BDT	17
		SSP1A475M7	17
		SSP1A475M7T	17
		SSP1A490BD	17
		SSP1A490BDS	17
		SSP1A490BDT	17
		SSP1A490M7	17
		SSP1A490M7T	17
		SSP1A4125BD	17
		SSP1A4125BDS	17
		SSP1A4125BDT	17
		SSP1A4125M7	17
		SSP1A4125M7T	17
		SSP1D412BD	17
		SSP1D412BDT	17
		SSP1D425BD	17
		SSP1D425BDT	17
		SSP1D440BD	17
		SSP1D440BDT	17
		SSP3A225B7	18
		SSP3A225B7R	18
		SSP3A225B7RT	18
		SSP3A225B7T	18
		SSP3A225BD	18
		SSP3A225BDR	18
		SSP3A225BDRT	18
		SSP3A225BDT	18
		SSP3A225F7	18
		SSP3A225F7R	18
		SSP3A225F7RT	18
		SSP3A225F7T	18
		SSP3A225P7	18
		SSP3A225P7R	18
		SSP3A225P7RT	18
		SSP3A225P7T	18
		SSP3A250B7	18
		SSP3A250B7R	18
		SSP3A250B7RT	18
		SSP3A250B7T	18
		SSP3A250BD	18
		SSP3A250BDR	18
		SSP3A250BDRT	18
		SSP3A250BDT	18
		SSP3A250F7	18
		SSP3A250F7R	18
		SSP3A250F7RT	18
		SSP3A250F7T	18
		SSP3A250P7	18
		SSP3A250P7R	18
		SSP3A250P7RT	18
		SSP3A250P7T	18
		SSRAL1	19
		SSRAL2	19
		SSRHD10	19
		SSRHP02	19
		SSRHP05	19
		SSRHP07	19
		SSRHP10	19
		SSRHP17	19
		SSRHP25	19



Schneider Electric Industries SAS

Head Office
35, rue Joseph Monier
F-92500 Rueil-Malmaison
France

The information provided in this documentation contains general descriptions and/or technical characteristics of the performance of the products contained herein. This documentation is not intended as a substitute for and is not to be used for determining suitability or reliability of these products for specific user applications. It is the duty of any such user or integrator to perform the appropriate and complete risk analysis, evaluation and testing of the products with respect to the relevant specific application or use thereof. Neither Schneider Electric nor any of its affiliates or subsidiaries shall be responsible or liable for misuse of the information contained herein.

Design: Schneider Electric
Photos: Schneider Electric